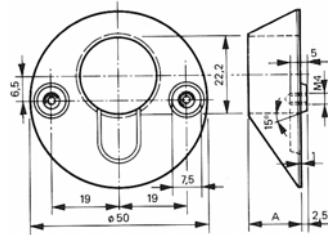
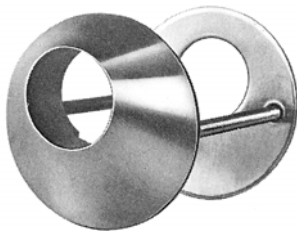


# Sicherheitsrosetten Rosaces de sûreté

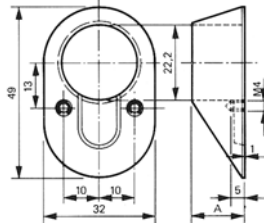
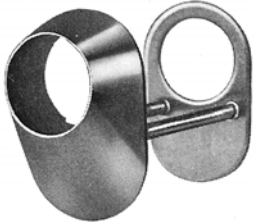


## A 50

Runde Ausführung Chromnickelstahl,  
für 22 mm Rundzylinder

Exécution rond acier inox pour cylindres 22  
mm rond

A=2, 4, 6, 8, 10, 12, 14, 16, 18, 20, 22 mm

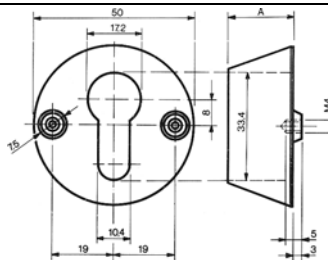
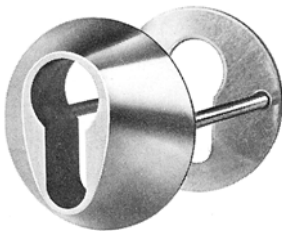


## B 32

Ovale Ausführung Chromnickelstahl,  
für 22 mm Rundzylinder

Exécution ovale acier inox pour cylindres 22  
mm rond

A=2, 4, 6, 8, 10, 12, 14, 16, 18, 20, 22 mm

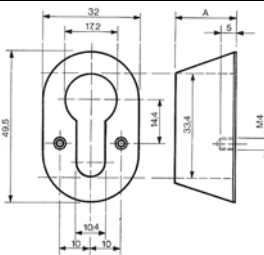


## C 50

Runde Ausführung Chromnickelstahl,  
für Hahnprofilzylinder

Exécution rond acier inox pour cylindres  
Hahn

A=2, 4, 6, 8, 10, 12, 14, 16, 18, 20 mm

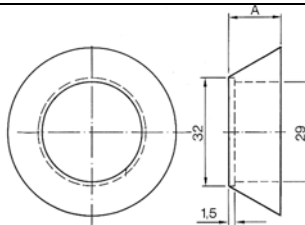
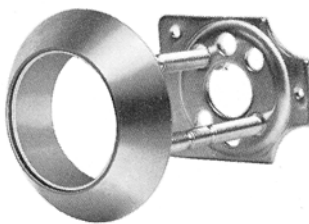


## D 32

Ovale Ausführung Chromnickelstahl,  
für Hahnprofilzylinder

Exécution ovale acier inox pour cylindres  
Hahn

A=2, 4, 6, 8, 10, 12, 14, 16, 18, 20 mm

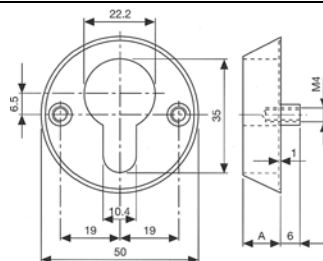
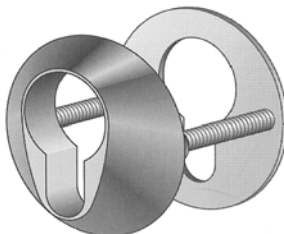


## G 50

Runde Ausführung Chromnickelstahl,  
für Aussenzylinder

Exécution rond acier inox pour cylindre  
extérieurs

A=2, 5, 10, 15, 20 mm

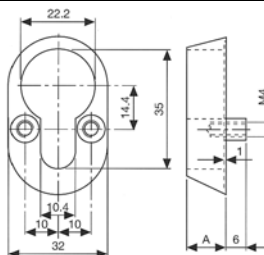


## E 50

Runde Ausführung Chromnickelstahl,  
für KESO KEK Zylinder 22 mm

Exécution rond acier inox pour cylindre  
KESO KEK 22 mm

A=2, 4, 6, 8, 10, 12, 14, 16 mm



## F 32

Avale Ausführung Chromnickelstahl,  
für KESO KEK Zylinder 22 mm

Exécution ovale acier inox pour cylindre  
KESO KEK 22 mm

A=2, 4, 6, 8, 10, 12, 14, 16 mm